



Home & Land Packages

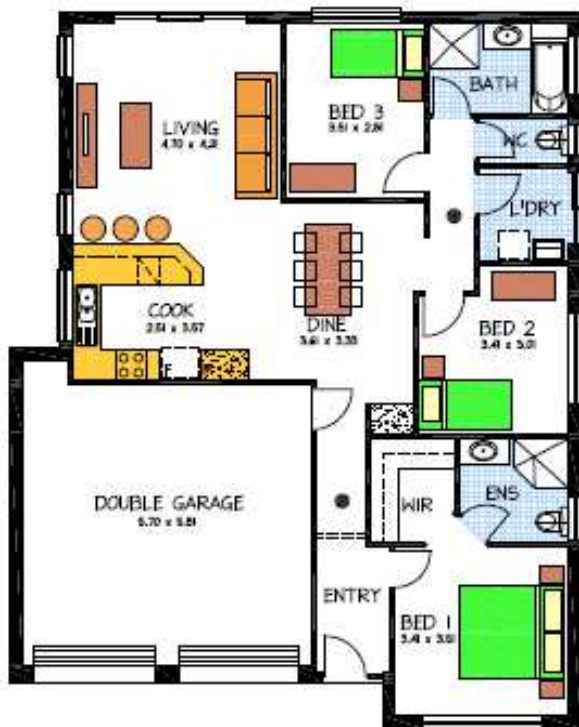


THE BOLERO

**LOT 369 CLIPPER COURT
ENCOUNTER BAY VICTOR HARBOR**

This package includes:

- The last block available on Clipper Court of 658m²
- Rossdale Homes Bolero design built to Sovereign Specifications
- 2.7m ceilings and a Tiled roof
- Quality Westinghouse appliances to the spacious kitchen
- Double garage with automatic roller doors and internal access
- Healthy footings allowance including all soil removal from site
- All services are allowed for including in-ground ELGAS tank for convenient gas supply to instantaneous HWS and gas hotplates
- 2500ltr rainwater tank supplied and installed as required by council and storm-water disposal system
- Master bedroom with ensuite and Walk in robe, Built in robes to bed 2 and 3, laundry cupboards included
- Carpets to all bedrooms and WIR with timber floating floors to all living areas and entry
- Reverse Cycle Ducted air-conditioning for all year round comfort
- Colored concrete perimeter path and driveway
- 100% Absolute Fixed Price Contract with no hidden costs
- 25 Year Structural Warranty



Disclaimer: All care has been taken in the preparation of this material. No responsibility is taken for any errors or omissions. Details are subject to change without notification. Images for illustration purposes only. E&EO.

PACKAGE FROM: \$386,000

**FOR THIS OFFER CALL
BRAD: 0421 940 398**

P: 08 8433 2000 www.rossdalehomes.com.au

